

# Migrating from QuarkXpress to Adobe InDesign



By **Bobbi Clements**  
instructor1@designnsk.com



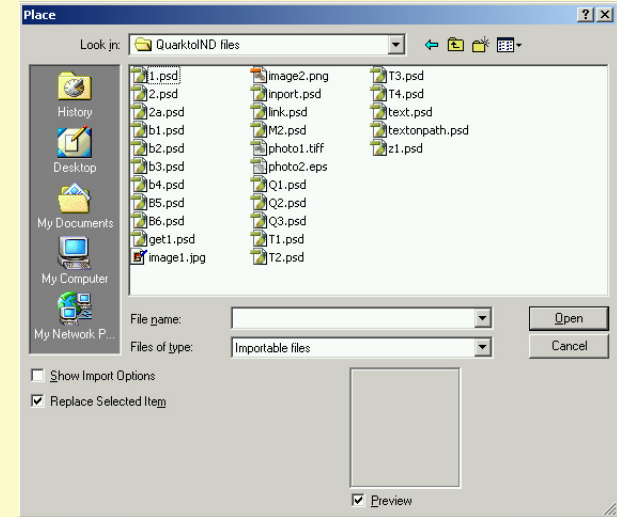
## Placing Files

### Page 1

Types of files you can place  
onto a page.

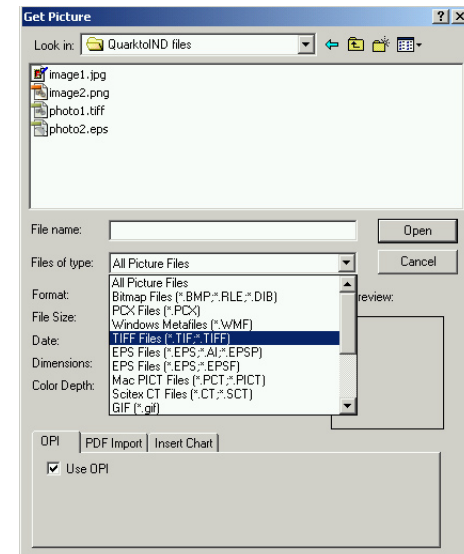
## Adobe InDesign CS

To place an image on a page choose File > Place and the Importable files will include any .psd (Adobe Photoshop files)! So no more worry about converting a file to the traditional TIFF, JPEG or EPS file format! Use your Adobe Photoshop files, and work with transparency and blending modes directly in Adobe InDesign CS!



## QuarkXpress

To place an image on a page you choose File > Get Picture and the importable files will only be the traditional ones. You CANNOT place a Adobe Photoshop file on the page.



# Migrating from QuarkXpress to Adobe InDesign



By **Bobbi Clements**  
instructor1@designnsk.com



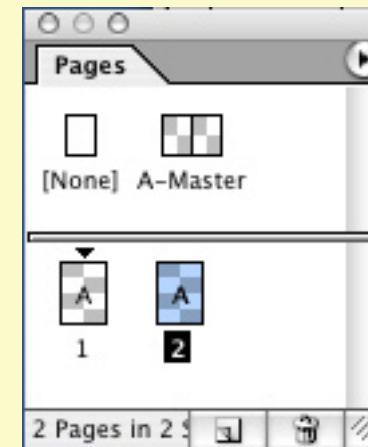
## Placing Files

### Page 2

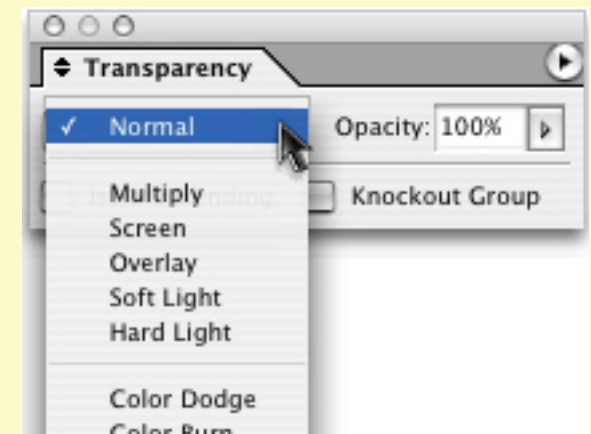
Using transparency and blending modes with the Adobe Photoshop files you have placed on your page.

## Adobe InDesign CS

When you place an Adobe Photoshop file on a page the page icon will be a checker board, to indicate that you have an image on the page that can blend with another overlapping image.



The Transparency palette allows you to change the opacity and blending modes of the interacting images. It's like you are in Adobe Photoshop working with your layers, and blending one layer with another. Yes, this is a screen shot taken from Adobe InDesign CS! This feature just can't be beat!



## QuarkXpress

You cannot place an Adobe Photoshop file, so there are no transparency or blending modes features.